

## Product Description

InsulWall® is a lightweight and structural insulated panel made from EPS-FR that is lined with a unique BlueScope® primed steel ready for third party coating systems such as a Dulux® Wash & Wear painted interiors and Dulux® Acratex® acrylic-render coated exteriors. InsulWall® is purpose designed to suit commercial applications as well as the residential housing, modular and renovation market. InsulWall® is available in thicknesses to suit 90mm interior walls and 140mm exterior walls and is available for use with the NCC CodeMark accredited InsulLiving® building system.

Panel Properties		
Panel Thickness (mm)	90	140
Mass (kg/m <sup>2</sup> )	11.80	12.50
Thermal Performance		
'U' Value (W/m <sup>2</sup> K)	0.43	0.27
'R' Value (m <sup>2</sup> K/W)	2.35	3.69

## Span Table

### NON-CYCLONIC WIND CATEGORY (WALL APPLICATIONS ONLY)

SL Grade EPS-FR Core / 0.6mm Steel Skins.

Maximum wall height / span (mm):	
Wind Class	Span (mm)
N2	5400
N3	4200
N4	3600

## Span Table

### CYCLONIC WIND CATEGORY (WALL APPLICATIONS ONLY)

SL Grade EPS-FR Core / 0.6mm Steel Skins.

Maximum wall height / span (mm):	
Wind Class	Span (mm)
C1	3600
C2	3000



Core	EPS-FR (Expanded Polystyrene with fire retardant)
Width (cover mm)	1200
Thickness (mm)	90, 140
Length	Up to 16m (check for availability)
Exterior Facing Skin	0.6mm G300 prime coated BlueScope® steel
Interior Facing Skin	0.6mm G300 prime coated BlueScope® steel
Exterior Coating	External coating should strictly follow Dulux® DuSpec Specification. Dulux® Acratex® Coventry Coarse
Interior Coating	Internal coating should strictly follow Dulux® DuSpec Specification Broad walls - Dulux® Wash & Wear 101 Adv L/G Kitchens - Dulux® Wash & Wear Kitchen Bathrooms - Dulux® Wash & Wear Bathroom L/G for wet areas
Finishes	Plain
Acoustic Properties	R <sub>w</sub> 24
Fire Hazard Properties - AS1530.3 indices	
Ignitability Index	0
Spread of Flame Index	0
Heat Evolved Index	0
Smoke Index	2-3

### AS/ISO 9705 - BCA Group Number (Spec C1.10a)

InsulWall® EPS-FR steel skinned insulated building panels conform to the requirements of the BCA Specification C1.10a as either Group 2 or Group 1 depending on the thickness and construction detail.

#### Group 1

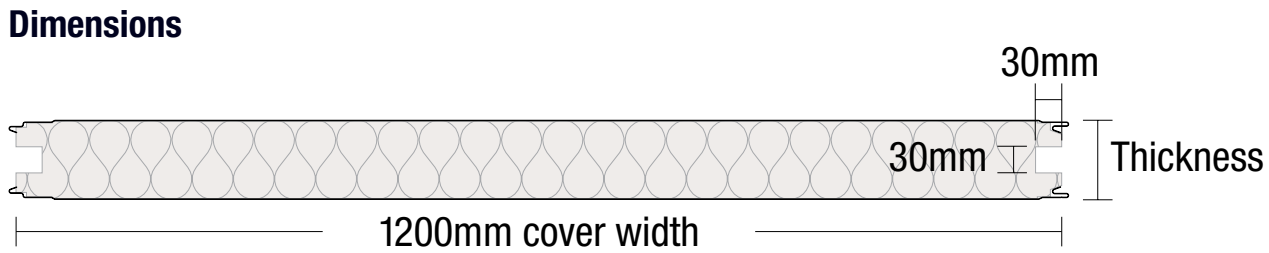
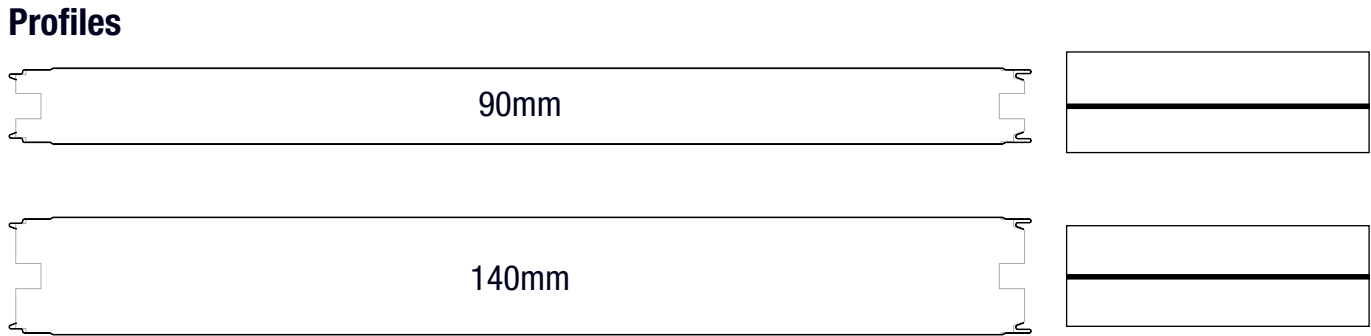
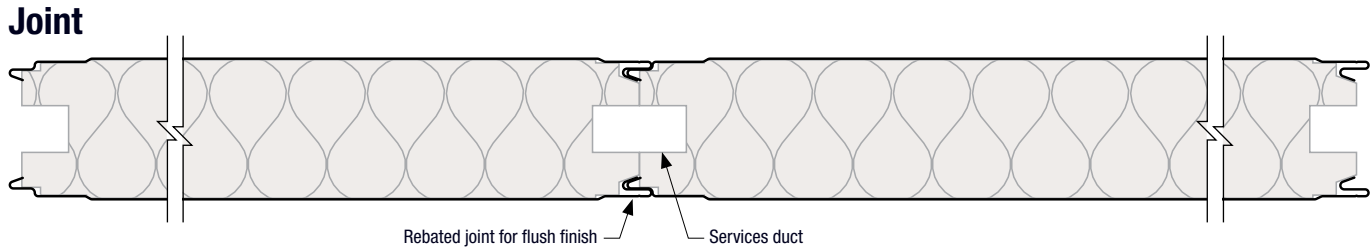
Panel up to 250mm thick with steel 'wall-wall' and 'wall-ceiling' angles fixed with steel rivets or screws at 1200mm centres is classified as Group 1.

#### Group 2

Panel 150mm or less with an aluminium 'wall-wall' and 'wall-ceiling' angles fixed with aluminium rivets or screws at 300mm centres is classified as Group 2. Panel thicker than 150mm requires steel 'wall-wall' and 'wall-ceiling' angles fixed with steel rivets or screws at 300mm centres to be classified as Group 2.

#### NOTES:

1. Wind speeds and coefficients based on AS 4055 - Wind Loads for Housing.
2. Serviceability deflection limit of span/150 has been allowed for.
3. Further information is available in the Technical Manual including: bracing capacity, axial load, support of cupboards and bracket loading.



**Bondor<sup>®</sup> National Network**

**BRISBANE / EXPORT**  
103 Ingram Road  
Acacia Ridge QLD 4110  
T: 07 3323 8500  
F: 07 3323 8501

**MELBOURNE**  
329A St Albans Road  
Sunshine VIC 3020  
T: 03 8326 8000  
F: 03 8326 8099

**SYDNEY**  
49 – 53 Newton Road  
Wetherill Park NSW 2164  
T: 02 9609 0888  
F: 02 9729 1114

**PERTH**  
17 Gauge Circuit  
Canning Vale WA 6155  
T: 08 9256 0600  
F: 08 9256 0620

**ADELAIDE**  
70 – 72 Rundle Road  
Salisbury South SA 5106  
T: 08 8282 5000  
F: 08 8282 5099

**LAUNCESTON**  
7 Connector Park Drive  
Kings Meadows TAS 7249  
T: 03 6335 8500  
F: 03 6335 8544

To connect to your nearest Bondor<sup>®</sup> branch simply call 1300 300 099 or visit [www.bondor.com.au](http://www.bondor.com.au)